

**Staff of the month
Paula Rose**



Opening Hours
Monday to Friday 8am to 5pm
Saturday 8am-4pm
Sunday 8am-4pm
Bank Holidays 10am to 4pm



Remember to keep checking the Government website for COVID-19 updates <https://www.gov.uk/coronavirus>

NEWSLETTER



February 2022

Fancy earning an extra £30? Refer a friend to Careline and once they have complete their first shift, we will pay £30 directly into your bank account on pay day! Please call the office if you would like some more information.



International Epilepsy Day

MONDAY, FEBRUARY 14 2022 IS INTERNATIONAL EPILEPSY DAY!

International Epilepsy Day is a special event which promotes awareness of epilepsy in more than 130 countries each year. Every year on the second Monday of February people join together to acknowledge and highlight the problems faced by people with epilepsy, their families and carers.

For more information please visit <https://internationalepilepsyday.org/>

PPE REQUIREMENTS AND REGULATIONS

Even though the regulations in England for members of the public have changed regarding the use of PPE, the regulations in the Health and Social Care sector remain the same. Please see confirmation of the current requirements. For further information please visit:

https://assets.publishing.service.gov.uk/government/uploads/system/uploads/attachment_data/file/1019791/20210609_COVID-19_PPE_community_and_social_care_settings_illustrated_guide.pdf

1 When you are giving direct physical care within 2 metres of someone with no symptoms of and not suspected of having COVID-19 infection

- Apron
- Gloves
- Fluid repellent Type IIR surgical mask
- Eye protection can be used, subject to risk assessment such as if where there is a risk of contact with body fluids. Prescription glasses are not eye protection.

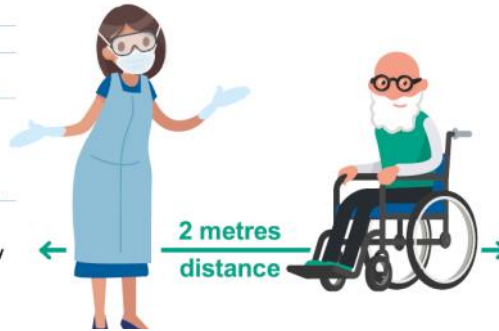
This PPE also applies if the person is clinically extremely vulnerable



2 When you are within 2 metres of anyone who is known to have, or has symptoms of, COVID-19 infection whether you are caring for them or not

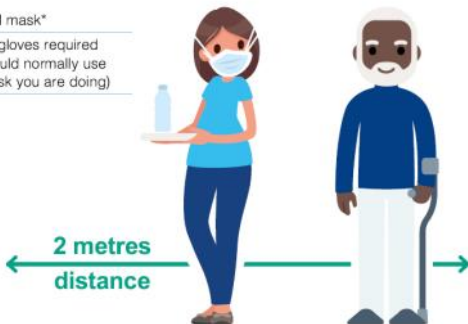
- Apron
- Gloves
- Fluid repellent Type IIR surgical mask
- Eye protection can be used, subject to risk assessment. Prescription glasses are not eye protection.

This PPE also applies if caring for a clinically extremely vulnerable person



3 Whenever you are 2 metres of another person

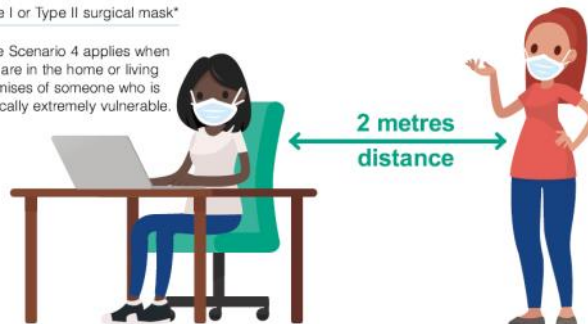
- Type II surgical mask*
- No apron and gloves required (unless you would normally use them for the task you are doing)



4 When you are in the workplace and 2 metres or more away from people you are caring for or supporting

- Type I or Type II surgical mask*

Note Scenario 4 applies when you are in the home or living premises of someone who is clinically extremely vulnerable.



**NEED A NEW POLO SHIRT??
GIVE US A CALL AT THE OFFICE!**

Please make sure that if you are taking a weekly COVID-19 test you let the Careline office know the results so that we can keep this information for our records!

Have you read the Careline COVID-19 Policy yet??

If not please make sure that you do - it's sent out with Newsletters and provides all that you need to know about Careline's response to the pandemic and what your responsibilities are!

We have a huge stock of PPE available at the office for all staff. Please give us a call if you want some - there's plenty to go round!!

Is your training up-to-date?

If not please contact us on your local number or training@carelineagency.co.uk

Reading 0118 9585858

Bracknell 01344 868990

Woking 01483 772977

Oxford 01865 722221

Swindon 01793 616263

Slough 01753 535358

Newbury 01635 524524

Southampton 023 8076 8686

Basingstoke 01256 474444